

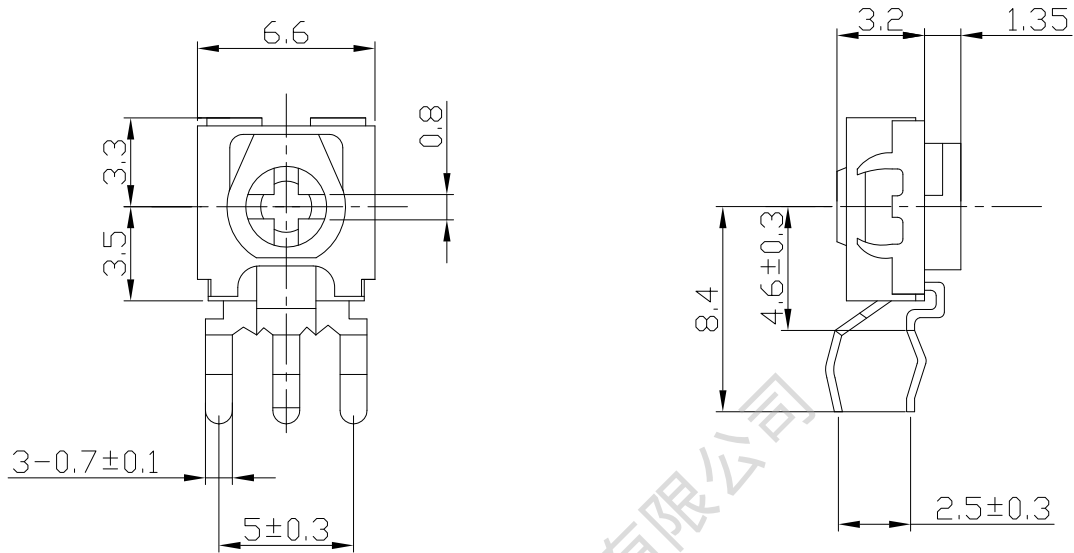


一、微調電阻系列技術規格書

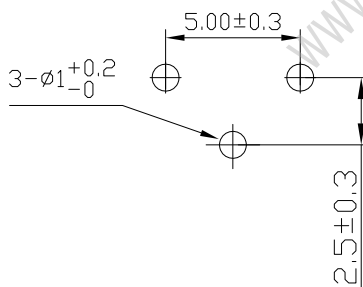
Common Specification For Semi-Fixed Potentiometers

1. 電器性能 (Electrical Characteristic)				
序号	項目		特性	
1.1	全阻抗值 (Total Resistance)		100 Ω ~ 2M Ω	
1.2	全阻抗值允許偏差 (Total Resistance Tolerance)		± 20%	
1.3	電阻隨溫度變化特性 (Resistance of temperature change character)		20℃-70℃ : ΔR/R ≤ ± 5%, -20℃-20℃ : ΔR/R ≤ ± 4.5%	
1.4	阻值變化特性 (Resistance Taper)		B	
1.5	零位阻值 (Residual Resistance)		R ≤ 1K 10 Ω Max R > 1K 3% Max.	
1.6	額定功率 (Rated Power)		Carbon Film Type 0.1W	
1.7	最高使用電壓 (Max. Operating Voltage)		AC50V at 50℃	
1.8	動雜音 (Rotational Noise)		Less Than 150mv	
1.9	溫度特性 (Temperature characteristics)		± 5-30% max 5 hours/70℃	
1.10	負載性能 (Load Life)		± 5% Max 3 hours rated load	
1.11	潮濕環境下負載性能 (Load Life In Humidity)		20% Max 350 hours rated in 90%RH 40℃	
2. 機械性能 (Mechanical Characteristics)				
2.1	全回轉角度 (Rotation Angle)		210° ± 10°	
2.2	旋轉力矩 (Rotation Torque)		20~250gf.cm	
2.3	轉動止檔強度 (Rotational Stop-End Torque)		350gf.cm. max	
2.4	焊錫耐熱性 (Resistance to soldering heat)		245 ± 5℃ and less than 3 seconds	
3. 耐久性能 (Durability)				
3.1	回轉壽命 (Rotation Life)		± 5% Max. for 100 rotations	
4. 外形尺寸圖/曲線特性圖 (Shape size drawing/curve characteristic drawing)			見附頁 (Please see attachment)	
5				
批 准		審 核		設 計
				

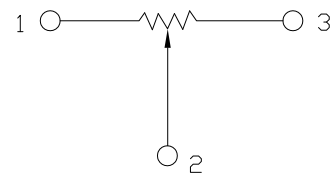
外形圖 Mechanical Dimensions



安裝孔位置圖
Mounting Hole



接線圖
Circuit Explanation

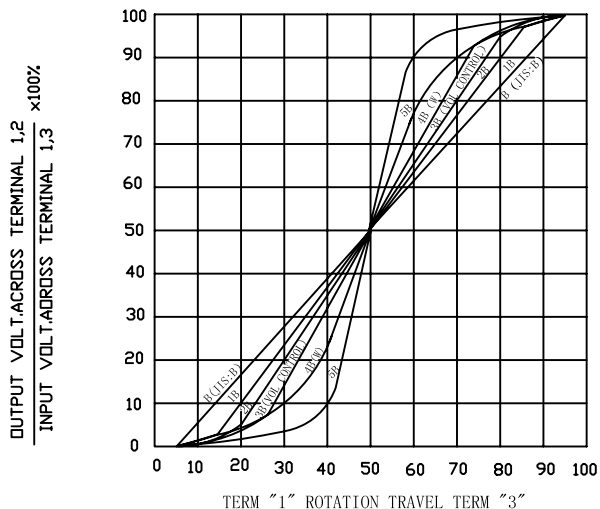


3					PRODUCT NAME	Semi-Fixed Potentiometers	
2							
1					MODEL NAME	SS063-Value	
NO	DATE	DESCRIPTION					
	DIMENSION	TOLERANCE	SCALE	2 : 1	APPROVED BY	CHECKED BY	DRAWN BY
	$l \leq 10$	± 0.2	UNIT	mm			<div style="border: 2px solid red; border-radius: 50%; padding: 5px; width: fit-content; margin: auto;"> <p style="margin: 0;">R & D</p> <p style="margin: 0;">2012.02.18</p> <p style="margin: 0;">Lisa</p> </div>
	$10 < l \leq 30$	± 0.5	VER.				
	$30 < l \leq 100$	± 1.0	DATE	08/07/02			

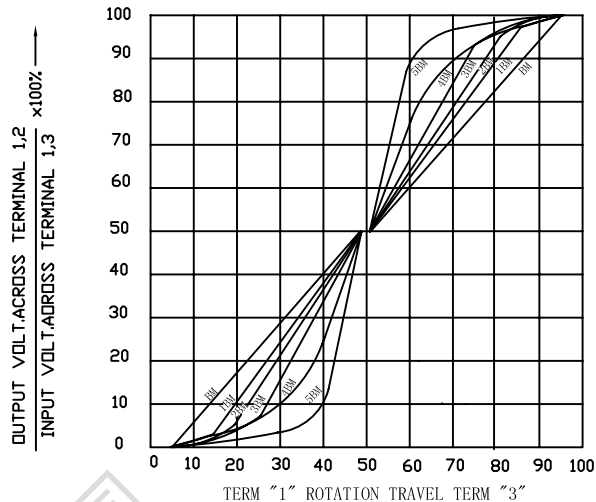


RESISTANCE TAPER

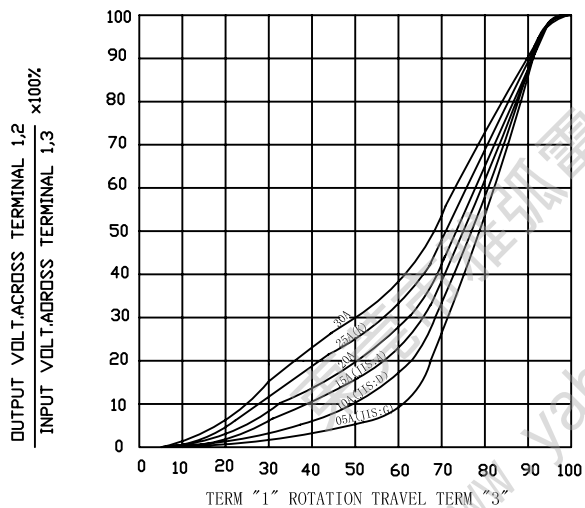
TAPER B SERIES



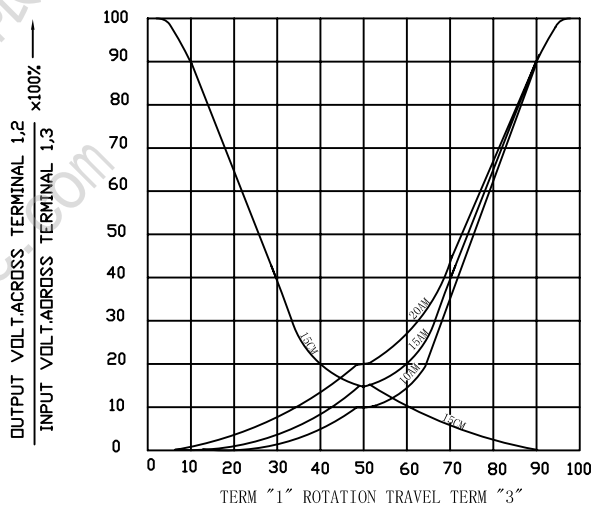
TAPER B WITH 50% TAP



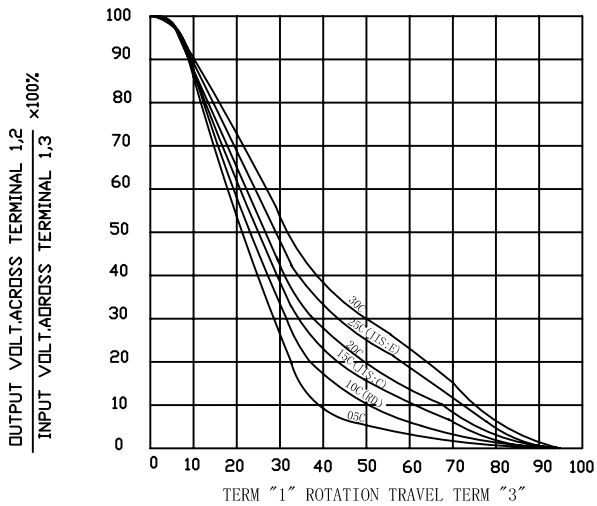
TAPER A SERIES



TAPER A & C WITH 50% TAP



TAPER C SERIES



TAPER M & N SERIES

