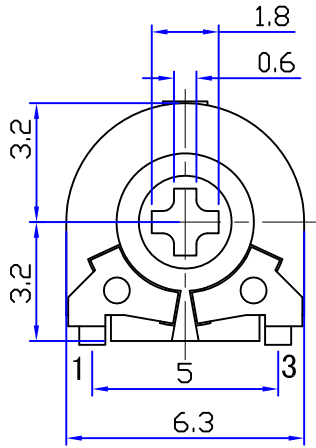
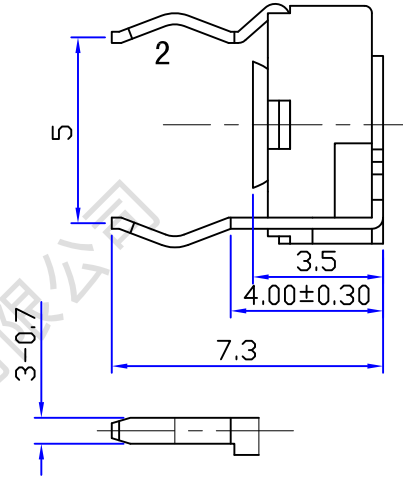


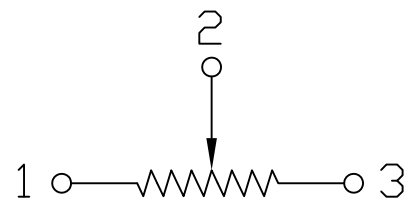
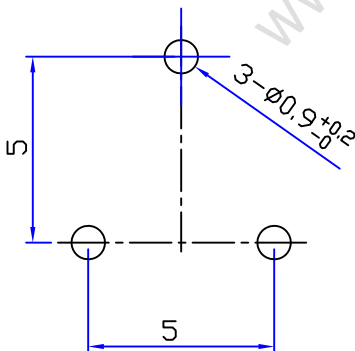
外形圖 Mechanical Dimensions



安裝孔位置圖
Mounting Hole



接線圖
Circuit Explanation



				PRODUCT NAME	Semi-fixed Potentiometer			
				MODEL NAME	SB065-1-Value			
NO	DATE	DESCRIPTION		APPROVED BY	CHECKED BY	DRAWN BY		
DIMENSION		TOLERANCE	SCALE	5:1				
$l \leq 10$		± 0.2	UNIT					mm
$10 < l \leq 30$		± 0.5	VER.					
$30 < l \leq 100$		± 1.0	DATE					2007/06/01

R & D

2011.11.18

Lisa



一、微調電阻系列技術規格書

Common Specification For Semi-Fixed Potentiometers

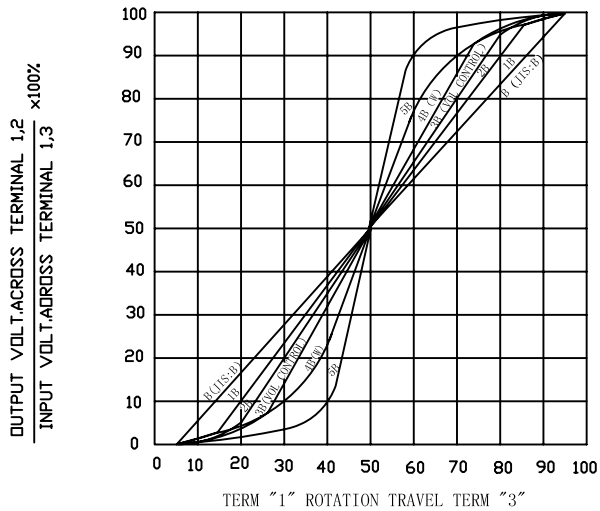
1. 電器性能 (Electrical Characteristic)				
序号	項目			特性
1.1	全阻抗值 (Total Resistance)			500 Ω ~ 2M Ω
1.2	全阻抗值允許偏差 (Total Resistance Tolerance)			± 20%
1.3	阻值變化特性 (Resistance Taper)			B
1.4	零位阻值 (Residual Resistance)			Term 1~2: Less than 30 Ω Term 2~3: Less than 30 Ω
1.5	額定功率 (Rated Power)			Linear Taper B 0.1W, Other than B curve 0.05W
1.6	最高使用電壓 (Max. Operating Voltage)			DC 100V
1.7	耐電壓 (Withstand Voltage)			1 minute at AC 500V
1.8	耐溫特性 (Temperature Characteristic)			-10°C ~ 70°C: ΔR/R ≤ ± 8%
1.9	潮濕環境下負載性能 (Load Life In Humidity)			<u>20%</u> Max <u>350</u> hours rated in <u>90%RH</u> <u>40°C</u>
2. 機械性能 (Mechanical Characteristics)				
2.1	全回轉角度 (Rotation Angle)			235° ± 10°
2.2	旋轉力矩 (Rotation Torque)			20 ~ 150gf. cm
2.3	轉動止檔強度 (Rotational Stop-End Torque)			≥ 0.4Kgf. cm. max
2.4	焊錫耐熱性 (Resistance to soldering heat)			<u>260 ± 5°C</u> and less than <u>3</u> seconds
3. 耐久性能 (Durability)				
3.1	回轉壽命 (Rotation Life)			10,000 cycles min
4. 外形尺寸圖 / 曲線特性圖 (Shape size drawing / curve characteristic drawing)				見附頁 (Please see attachment)
5				
批 准		審 核		設 計



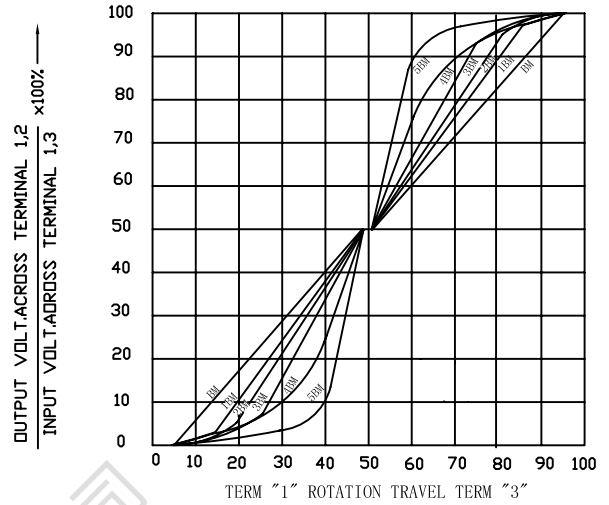


RESISTANCE TAPER

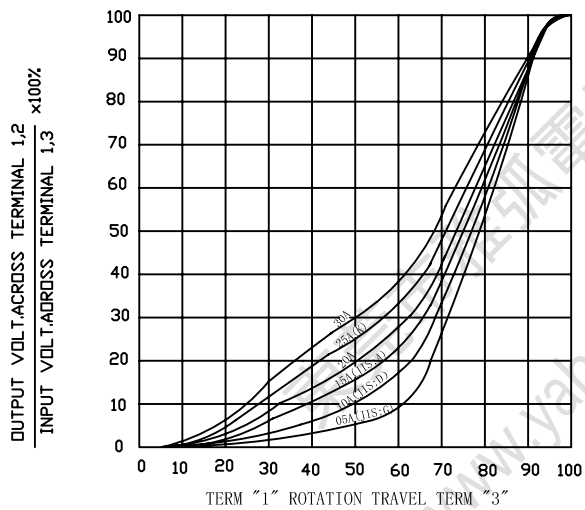
TAPER B SERIES



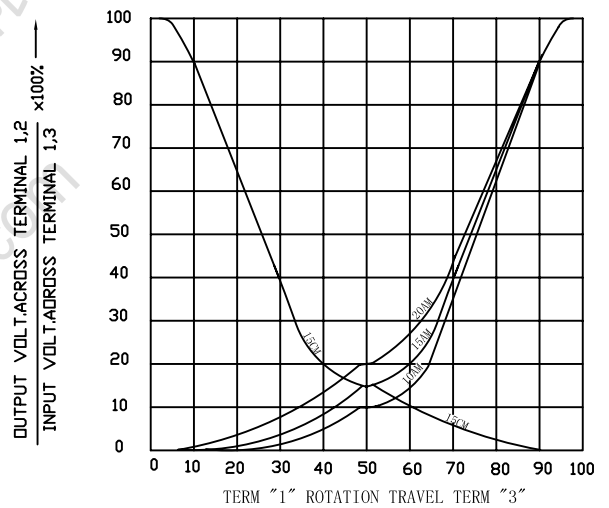
TAPER B WITH 50% TAP



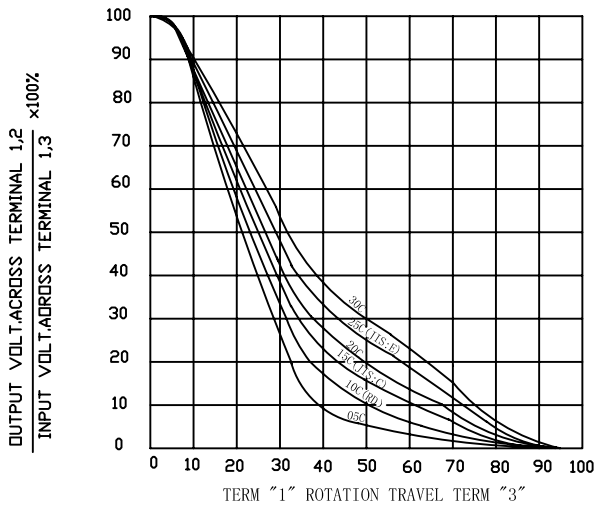
TAPER A SERIES



TAPER A & C WITH 50% TAP



TAPER C SERIES



TAPER M & N SERIES

